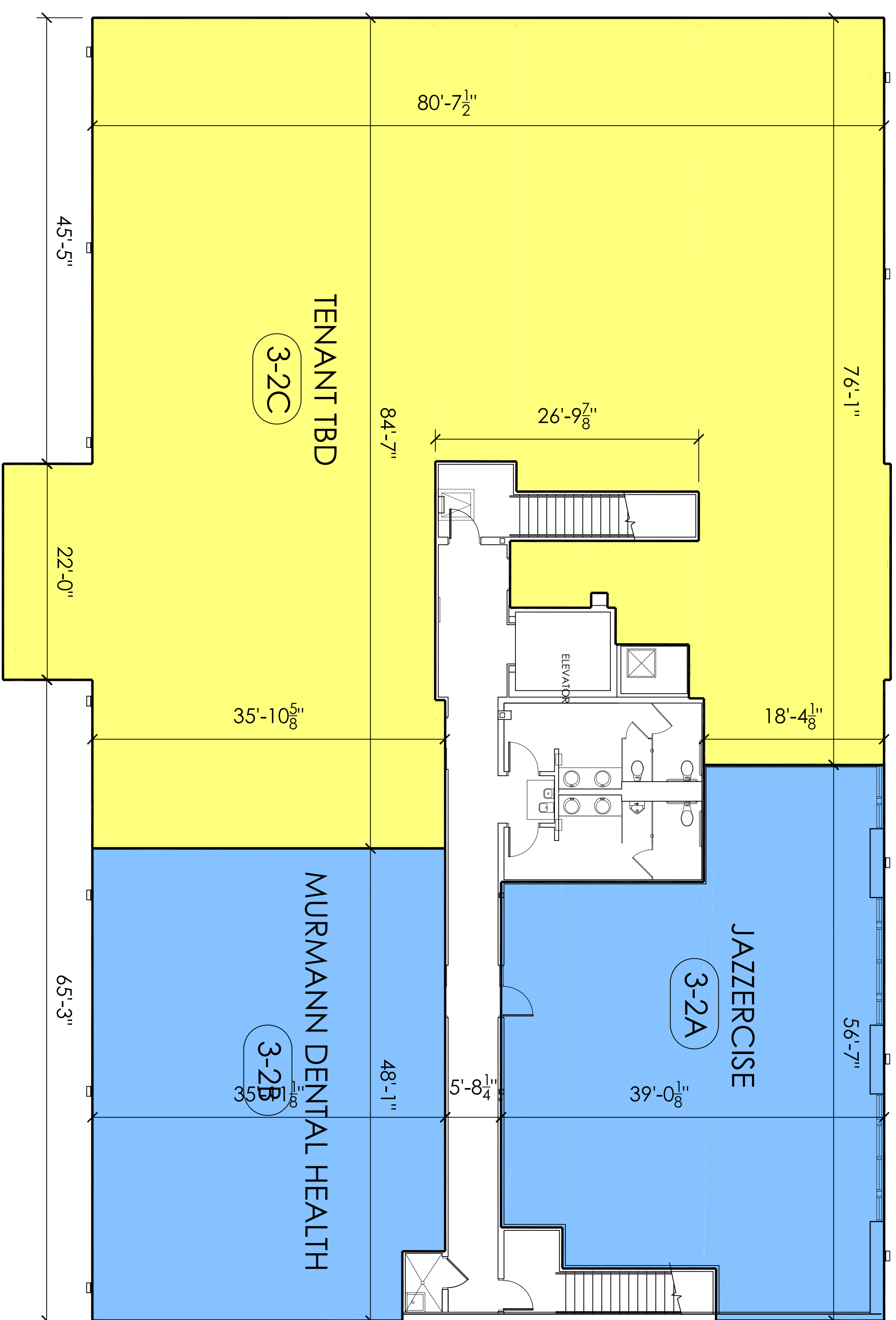


GROUND FLOOR

2531 W 75TH ST. - GROUND FLOOR		LEASABLE SQ. FT.
SUITE	TENANT NAME	
3A	HALLMARK	4,099 SQ. FT
3B	CHARLES IFERGAN SALON	3,060 SQ. FT
3C	LaVida	2,247 SQ. FT
TOTAL		9,406 SQ. FT



SECOND FLOOR

2531 W 75TH ST. - 2ND FLOOR		RENTABLE SQ. FT.
SUITE	TENANT NAME	
3-2A	JAZZERCISE	2,092 RSF*
3-2B	MURMANN DENTAL HEALTH	1,952 RSF*
3-2C	TENANT TBD	6,959 RSF*
TOTAL		11,003 RSF*

* Square footage numbers include common areas.

FLOOR LEASING PLAN: BUILDING #3 CONCEPT 28

